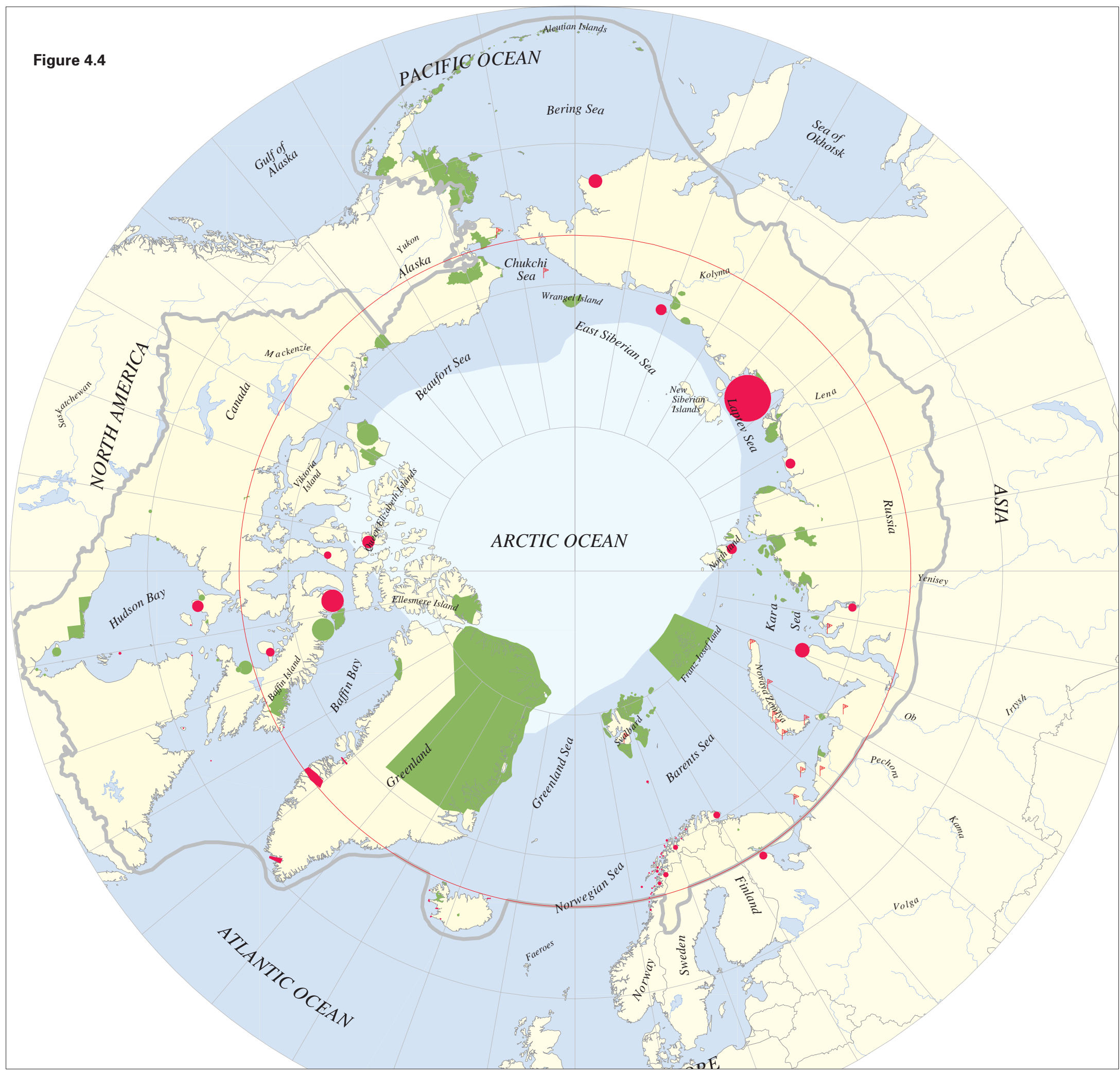








Figure 4.4



Coastal and Marine Protected Areas

- Existing and Proposed

(Includes Marine Protected Areas and Protected Areas with Major or Minor Marine or Coastal Components)

-  Existing Protected Areas with a marine Component
-  Existing Protected Areas of unknown Shape with a Marine Component
-  Proposed Protected Arctic marine Areas of unknown Shape
-  Proposed Protected Arctic marine Areas of unknown Shape and Size
-  Southern limit of Arctic data as provided by CAFF member countries
-  Arctic Circle (Latitude: 66° 33' North)

Source data supplied by CAFF member countries:

Canada	Finland	Greenland/Denmark/Iceland	Norway	Russia	Sweden	USA
						

Compilation and map production by:

 Norway			 WORLD CONSERVATION MONITORING CENTRE
---	---	---	---

Disclaimer:
Neither the delineation of boundaries nor the use of any name in the publication implies an expression of opinion on the part of UNEP concerning the legal status of any country or territory, or of its authorities, or concerning the delimitation of the frontiers of any country or territory.
Projection: Lambert-Azimuthal Equal Area. UNEP/GRID-Arendal March 1996.