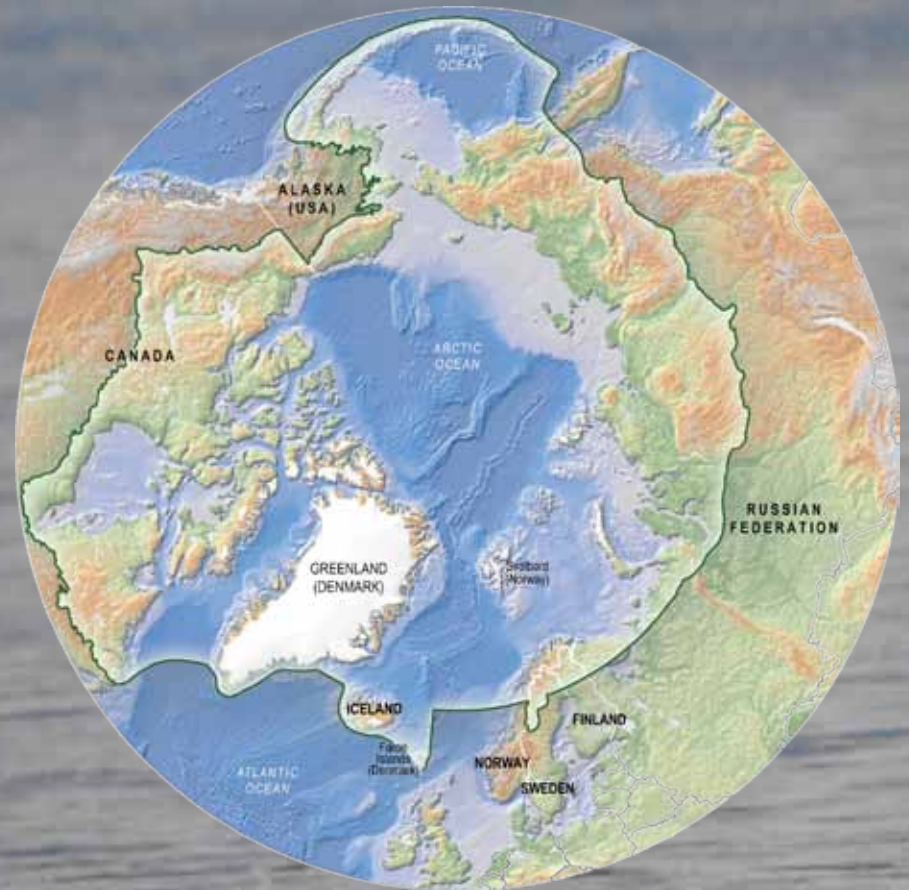


Conservation of Arctic Flora & Fauna

Coordinating for Arctic Conservation

Arctic Council

- **8 Arctic countries**
- **6 Indigenous organisations**
- **Observers - non Arctic countries & International organisations**
- **6 Working Groups**
- **Conservation of Arctic Flora & Fauna (CAFF) - Biodiversity focus**



Mandate

- **To address the conservation of Arctic biodiversity, and to communicate the findings to the governments and residents of the Arctic, helping to promote practices which ensure the sustainability of the Arctic's living resources.**
- **To monitor, assess, report on biodiversity in the Circumpolar Arctic**

Activities

- Promoting & facilitating science
- Conservation strategies
- Biodiversity Assessment
- Biodiversity Monitoring
- Communication & outreach
- Global linkages

Arctic Sea Ice

- **Unique Arctic habitats for flora and fauna, including sea ice have been disappearing over recent decades** --- *Arctic Biodiversity Trends 2010*
- **The loss of Arctic sea ice threatens biodiversity across an entire biome and beyond** --- *CBD GBO3*

Responses

- **Arctic Biodiversity Assessment** --- www.caff.is/aba
- **Circumpolar Biodiversity Monitoring Programme (CBMP)** --- www.cbmp.is
- **Sea Ice Associated Biodiversity**
--- asib-arcticportal.org

[About Data](#)[Press center](#)[CAFF](#)[PAME](#)[Biodiversity](#)[Shipping](#)[Boundaries](#)[Topography](#)[Protected Areas](#)[Human Dimension](#)[Program view](#)

- Home
- What is ArcticData?
- What data can I get?
- Species trend index
- Download Centre
- Interesting Links
- Contact ArcticData

Home > Species trend index

Species trend index

Scientific Name:

Common Name:

Dependency:

Place / Region:

Arctic Region:

☒ Low Arctic☒ High Arctic☒ Sub Arctic

Guild:

[Generate](#)

Record(s): 0

Results

Scientific Name



Common Name



Country



Measure



No data available!



For information contact:

**CAFF International
Secretariat
Borgir, Nordurslod, 600
Akureyri, Iceland
Phone: +354 462-3350
Email: caff@caff.is
www.caff.is**

